

THE BENCHMARK OF
QUALITY, PRECISION, STYLE AND VALUE



CROTON

SINCE 1878

OWNERS MANUAL AND WARRANTY INFORMATION

Croton instruction booklet 1

CONGRATULATIONS!

You have just acquired a finely crafted Croton timepiece that we are sure you will enjoy for many years to come.

Croton has been crafting high quality timepieces for more than 130 years. Built on a rich tradition that began in 1878, at Croton we search the world over for the finest materials available with which to build our spectacular watches such as: 316L stainless steel, sapphire crystals and exotic leather straps. We then entrust these precious materials to the creative genius and unparalleled expertise of the Croton watchmakers. The result is an exquisite, ever evolving collection of fine Croton timepieces that will surely stand the test of time, at a value everyone is quick to admire.

Take confidence in knowing that your timepiece is protected by an unprecedented limited lifetime warranty. Croton is the benchmark of quality, precision, style and value.

Visit our website www.crotonwatch.com, stop by the "Press" section, sign up for our newsletter and be the first to learn about new product introductions as well as other exciting Croton news!

2

HELPFUL TERMS

Movement: The engine that powers all timepiece functions.

Automatic Movement: Mechanical Movement powered by the movement of your wrist free of any battery assistance.

Quartz Movement: Electronic Movement powered by an internal battery and regulated by a quartz crystal.

Chronograph: Timepiece possessing stopwatch functions.

Bezel: Outer dial ring on top of the watch case.

Clasp: Instrument used for watch band closure.

Crown: Knob used for adjusting watch functions.

Screw down crown: Crown used for adjusting watch functions that can be screwed tight for added water resistance.

Crystal: Transparent, protective dial cover.

Dial: Watch face.

3

BASIC INSTRUCTIONS

TO SET TIME

1. Extend crown to position 3.
2. Rotate crown clockwise to desired time.
3. Depress crown back to 1st position.

TO SET DAY/DATE

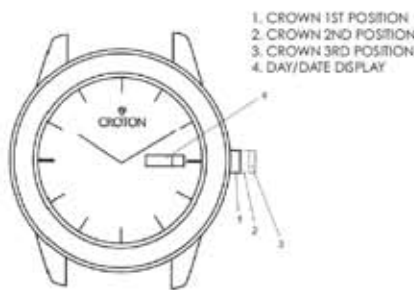
1. Extend crown to 2nd position.
2. Rotate crown clockwise to desired date.
3. Rotate crown counterclockwise to desired day.
4. Depress crown back to 1st position.
5. Do not adjust the day/date on an automatic watch while the watch is set between 9pm-3am as this will damage the movement.

SCREW DOWN LOCK CROWN

Some watches have screw down crowns. To open grasp crown and turn counterclockwise, to close press & screw in clockwise.

6

BASIC INSTRUCTIONS



1. CROWN 1ST POSITION
2. CROWN 2ND POSITION
3. CROWN 3RD POSITION
4. DAY/DATE DISPLAY

7

WATER RESISTANCE

Water resistance testing of watches is rated in a laboratory by pressure tests done on a watch in a static position. However, many water based activities involve a lot of movement and involve other environmental changes. These exceptions to how the watch is rated may challenge or eliminate the water protection features of a water resistant watch. In particular, the water resistance rating of a watch does not take into account sudden, rapid and repeated water pressure changes, high water temperatures and sudden changes of temperature.

Do not wear your watch in the shower or bath as this can affect its water resistance. Steam can penetrate rubber gaskets, cause condensation on the crystal and rust the movement. In addition, sudden temperature changes can adversely affect the watch, if your watch is equipped with a screw down crown, make sure it is in the locked position to ensure its water resistance.

4

WATER RESISTANCE TABLE

Case	Depth/Ft/Meter	Splash Rain	Swimming	Snorkeling	Scuba Diving
Unmarked		NO	NO	NO	NO
Marked:					
1 ATM	33FT/10M	YES	NO	NO	NO
3 ATM	100FT/30M	YES	NO	NO	NO
5 ATM	165FT/50M	YES	YES	NO	NO
10ATM	330FT/100M	YES	YES	YES	NO
20ATM	660FT/200M	YES	YES	YES	YES*
30ATM	1,000FT/303M	YES	YES	YES	YES*
50ATM**	1,650FT/500M	YES	YES	YES	YES*

*Only with a screw down, lock crown and pusher.
**When diving in a helium environment, watch should be equipped with a helium escape valve.

5

BASIC INSTRUCTIONS

TO POWER AN AUTOMATIC MOVEMENT

- An automatic watch is powered by motion without a battery.
1. While the crown is in the 1st position (unlocked if it contains a screw down crown) wind the crown 15-20 times clockwise.
 2. The movement of your wrist should keep your watch wound.
 3. When your watch is fully wound, if left stationary, it should run accurately for 24-30 hours depending on the movement.
 4. If you are using a watchwinder it should be set to run clockwise for Japan automatics and either clockwise or counterclockwise for Swiss automatics.

TO SET QUICK CHANGE DATE

Some automatic movements have a special date change feature.

1. Pull or unscrew crown to 3rd position.
2. Extend crown out until you feel a click. Each time you extend the crown the date will change.
3. Close crown or screw down depending on crown type.

8

BASIC INSTRUCTIONS

Moonphase Function

Some Automatic and Quartz timepieces come equipped with a function for monitoring the phases of the moon.

1. Do an internet search for the current moonphase.
2. Pull or unscrew crown to 3rd position.
3. Rotate the crown clockwise to advance the moonphase to the correct position.
4. Close or screw down crown depending on crown type.

*Note that as each month has unique lunar rotations your moon phase timepiece will need to be adjusted monthly.

9

MIYOTA OS CHRONOGRAPH

TO SET TIME

1. Extend crown to position 3.
2. Rotate crown clockwise to desired time.
3. Depress crown back to original 1st position.

TO SET DAY/DATE

1. Extend crown to 2nd position.
2. Rotate crown clockwise to desired date.
3. Depress crown back to 1st position.

USING CHRONOGRAPH FUNCTION

1. Press Pusher A to initiate chronograph function.
2. Press Pusher A to stop chronograph function.
3. Press Pusher B to reset chronograph.

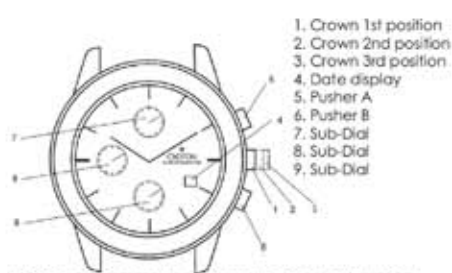
TO RESET CHRONOCOUNTER TO SPECIFIC POSITIONS

1. Pull Crown to third position.
2. Press the "A" pusher and hold to move counterclockwise.
3. Close crown and initiate chronograph.

NOTE: Do not press Pusher B while chronograph is in motion.

10

MIYOTA OS CHRONOGRAPH

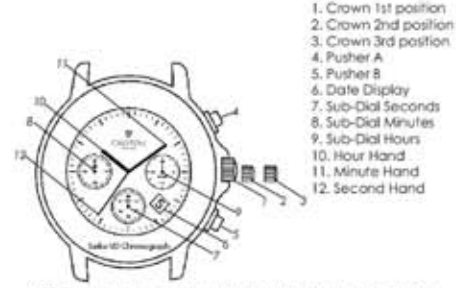


1. Crown 1st position
2. Crown 2nd position
3. Crown 3rd position
4. Date display
5. Pusher A
6. Pusher B
7. Sub-Dial
8. Sub-Dial
9. Sub-Dial

NOTE: Some chronographs may have sub-dials in other formations.

11

SEIKO VD CHRONOGRAPH



1. Crown 1st position
2. Crown 2nd position
3. Crown 3rd position
4. Pusher A
5. Pusher B
6. Date Display
7. Sub-Dial Seconds
8. Sub-Dial Minutes
9. Sub-Dial Hours
10. Hour Hand
11. Minute Hand
12. Second Hand

NOTE: Some chronographs may have sub-dials in other formations.

NOTE: Do not press Pusher B while chronograph is in motion.

12

SEIKO VD CHRONOGRAPH

TO SET TIME

1. Extend crown to position 3.
2. Rotate crown clockwise to desired time.
3. Depress crown back to original 1st position.

TO SET DAY/DATE

1. Extend crown to 2nd position.
2. Rotate crown clockwise to desired date.
3. Depress crown back to 1st position.

USING CHRONOGRAPH FUNCTION

1. Press Pusher A to initiate chronograph function.
2. Press Pusher A to stop chronograph function.
3. Press Pusher B to reset chronograph.

TO SET CHRONOCOUNTER TO SPECIFIC POSITIONS

1. Pull Crown to third position.
2. Press the "A" pusher to move counterclockwise.
3. Press the "B" pusher to move clockwise.
4. Close crown and initiate chronograph.

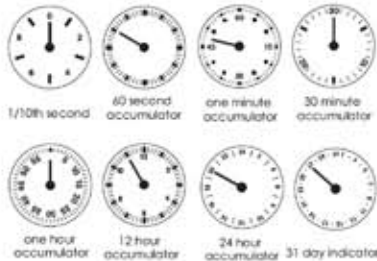
NOTE: Do not press Pusher B while chronograph is in motion.

13

Croton instruction booklet 2

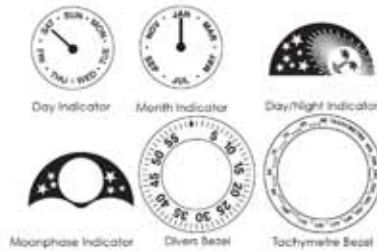
SUB-DIALS

These are some of the most common sub-dials.



14

SUB-DIALS & BEZELS



15

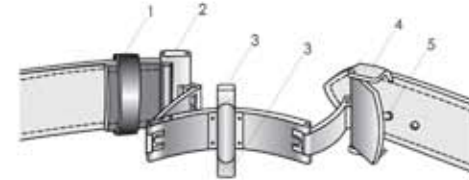
CLASP INSTRUCTIONS

TO ADJUST

1. Grasping both sides of interior buttons depress together.
2. Lift the top part of buckle.
3. Lift strap off peg and slide to desired length.
4. Place desired strap hole over peg and lower onto peg.
5. Snap top part of buckle closed.
6. With watch on wrist close side without peg first.
7. Close peg side.
8. Slide extra strap length into strap keeper.

16

CLASP INSTRUCTIONS



1. Strap keeper
2. Side without peg
3. Interior buttons
4. Top buckle
5. Peg

17

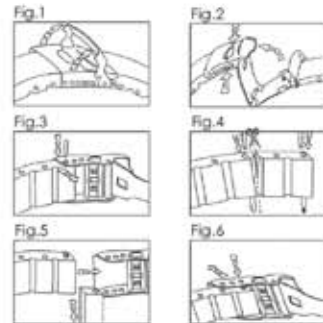
RUBBER STRAP ADJUSTMENTS

TO ADJUST

1. Lift to open safety lock as in Fig. 1.
2. Push side button to release and open buckle as Fig. 2.
3. Push down spring bar with a pin, pull strap sideways to disassemble strap from buckle as Fig. 3.
4. Cut along grid channel to shorten strap. Push out both rod and spring bar with a pin as Fig. 4. Cut one channel at a time on each side until band fits comfortably.
5. Remove excess rubber and insert spring bar into 1st hole as Fig. 5.
6. Place one end of spring bar into desired hole, push down the other end, slide strap towards the buckle simultaneously. Spring bar pops into parallel home and holds strap in position as Fig. 6.

18

RUBBER STRAP ADJUSTMENTS



19

CARE FOR YOUR TIMEPIECE

Do not immerse your watch in water unless it is marked water resistant. Do not wear your watch in a hot shower even if marked water resistant. Do not expose your watch to soap as it is a fine abrasive.

Moisture and dust are detrimental to the accuracy and function of precision made watch parts. Therefore a damaged crystal or crown should be replaced immediately.

Strong magnetic fields can negatively affect both quartz and mechanical movements.

All leather straps need care. Exposure to water may cause your strap to become brittle and crack. Contact with harsh abrasives should also be avoided to preserve the finish of the leather. Leather straps can be wiped clean with a soft dry cloth or carefully applied special leather cleaners.

All metal bracelets may be wiped clean with a dry or slightly damp soft cloth.

20

LIMITED LIFETIME WARRANTY

Your Croton timepiece is warranted for lifetime against failures due to defective materials or workmanship. Should such a defect occur, it will be repaired free of charge (except for a \$19.95 shipping, handling & insurance fee) within a reasonable period of time from the date of its receipt at our factory service center.

Do not attempt to open a watch yourself. Repairs should only be performed by our repair center to ensure dust free conditions and to maintain the water resistance and accuracy of your timepiece, as well as keep in effect full coverage of the Croton warranty.

This warranty does not cover free repair or replacement of cases, batteries, watchbands, straps, plating, dials, crowns, or crystals within the warranty period since such items are subject to "wear and tear" of daily use.

21

LIMITED LIFETIME WARRANTY

Should your timepiece require repair, Croton is proud to be able to offer you two methods of working with our outstanding customer service team.

The first and fastest method is via the internet. By logging onto: www.crotongroup.com/customerservice you have the ability to save time, as well as the hassle of lengthy phone calls. Its very simple to use and offers you added peace of mind updating you through every step of the repair process.

If you feel more comfortable contacting us via telephone, you may do so by contacting our customer service hotline at: 201.939.5100 ext. 1042 or 1-8664CROTON ext. 1042.

When sending your timepiece for repair please enclose a note explaining the nature of the problem as well as check or money order payable to Croton Watch Company in the amount of \$19.95 to cover shipping, handling & insurance fees.

22

RETURN REGISTRATION FORM

Complete and mail this form with your watch when sending it for service or repair. Enclose a note explaining the nature of the problem your timepiece is experiencing, a copy of your original sales receipt as well as a check or money order payable to Croton Watch Company in the amount of \$19.95 to cover shipping, handling & insurance fees.

NAME: _____
 ADDRESS: _____
 CITY: _____
 STATE: _____
 ZIP: _____

PURCHASE DATE: _____
 PURCHASE LOCATION: _____

23

THE BENCHMARK OF
QUALITY, PRECISION, STYLE AND VALUE



CROTON

SINCE 1878

CROTON WATCH COMPANY INC.
195 ANDERSON AVENUE
MOONACHIE, NJ 07074

WWW.CROTONWATCH.COM